

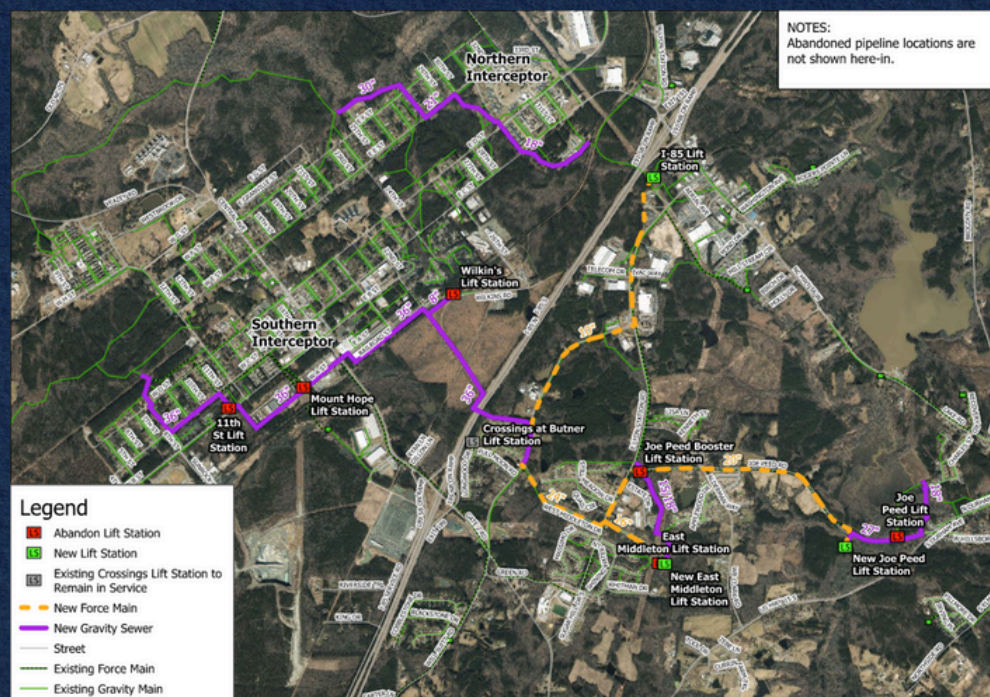


Primary contractor
work hours will be
Monday - Friday
7 AM to 7 PM

INTERSTATE-85

SANITARY SEWER IMPROVEMENT PROJECT

Project Map:



MISSION

SGWASA's mission is to provide quality water and sanitary sewer services to our customers in an efficient, sustainable, and environmentally conscious manner

sgwasa.org/i85

sgwasa.org

PROJECT OVERVIEW

The South Granville Water & Sewer Authority has partnered with engineering experts CDM Smith to conduct the I-85 Sanitary Sewer Improvement Project. This project will replace aging materials to maintain an infrastructure that meets Granville County’s present and forthcoming capacity demand.

TIMELINE



FINAL DESIGN, EASEMENTS, PERMITTING

CP#1 Design, Easements, Permitting

CP#2 Design, Easements, Permitting

BIDDING & AWARD

CP#1 Bidding & Award

CP#2 Bidding & Award

CONSTRUCTION

CP#1 Construction

CP#2 Construction



PROJECT 1

PRIMARY POINTS:

- Joe Peed Lift Station
- East Middleton Lift Station
- Joe Peed Force Main
- Abandon Ex. Joe Peed & Booster LS
- Abandon Ex. East Middleton LS
- East Middleton Force Main
- Combined Force Main
- Joe Peed Lift Station Gravity Sewer

PROJECT 2

PRIMARY POINTS:

- Northern Interceptor
- Southern Interceptor
- Abandon Mt. Hope Lift Station, 11th Street Lift Station, Wilkins Road LS

Bid Alternates

- I-85 Lift Station
- I-85 Force Main
- Ledge Creek GS Sewer Relocation
- East Middleton GS



What exactly is the purpose of the I-85 Sanitary Sewer Improvement Project?

This project will address insufficient capacity in the North Interceptor, South Interceptor, Joe Peed Lift Station, and East Middleton Lift Station

What is the total estimated Project Cost?

CDM Smith’s engineer experts and project specialists estimate the project total to be **\$75,036,000.**

Will residents be made aware of road closures before they occur?

Absolutely. Project managers will update residents via multiple news and information outlets. SGWASA’s official website and social media pages will highlight project updates in conjunction with community notices via the news and public signage.

How is this project being funded?

The total cost of the project is supported through a combination of a \$35 million ARPA Grant alongside a \$35 million low-interest USDA loan from Rural Water program.

SGWASA is also poised to contribute a \$6.9 million match.

Have questions about the project? Email sgwasaprojects@sgwasa.org